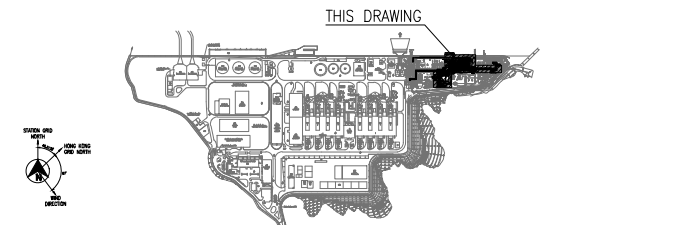
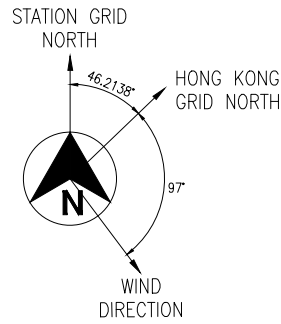


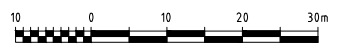
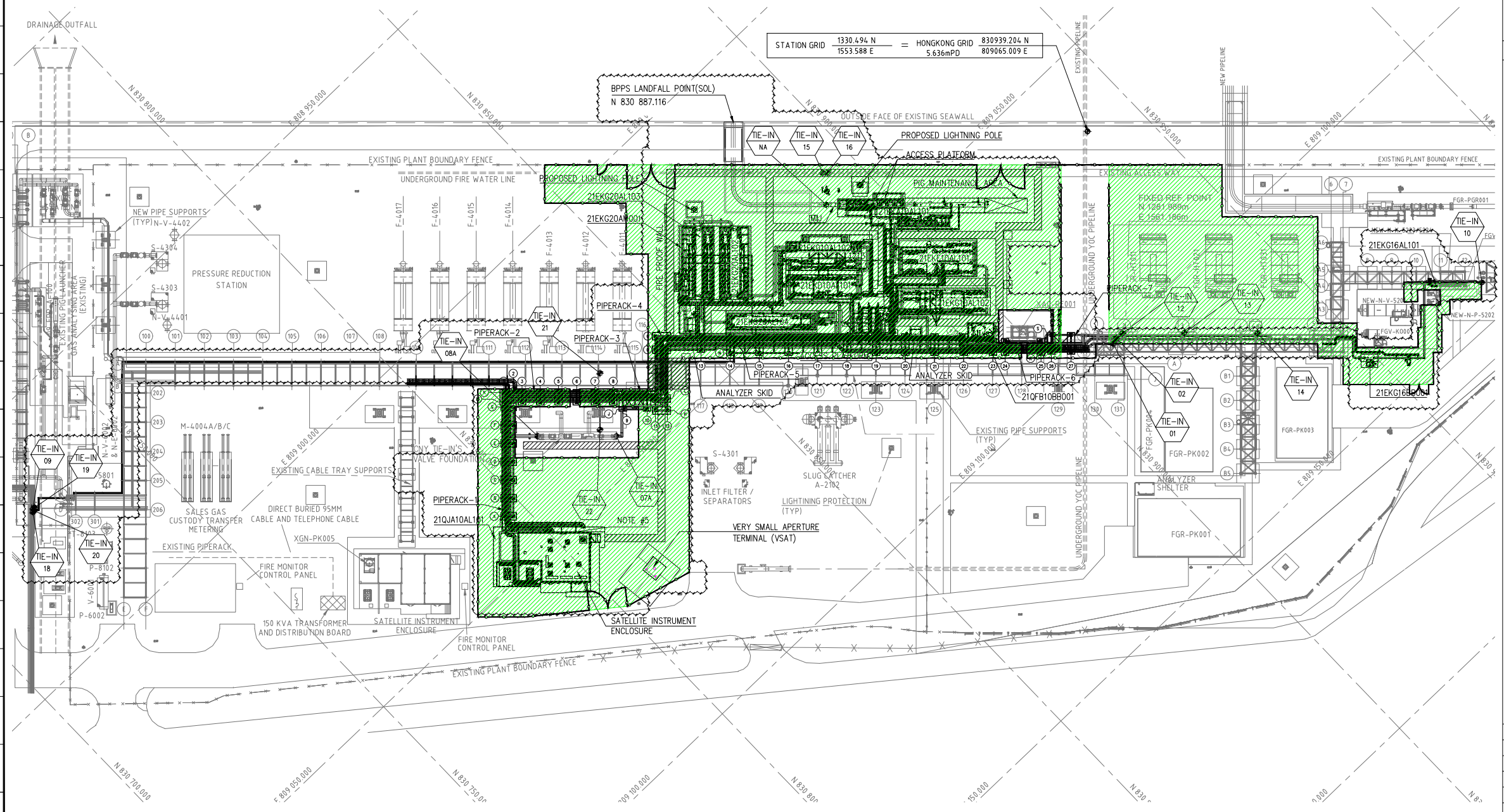
ANNEX D

INDICATIVE WORKS AREAS FOR THE GRS AT BPPS



- GENERAL NOTES**
1. ALL DIMENSIONS ARE IN mm, ELEVATIONS & COORDINATES ARE IN m.
 2. NOMINAL GRADE (PIPING DATUM) 0.000m = NOMINAL GRADE (HONG KONG DATUM) 5.700m.
 3. RELATIONSHIP OF HONG KONG GRID TO STATION GRID.
H.K. GRID 808 950.493 E = STATION GRID 0.000 E
828 896.966 N = STATION GRID 0.000 N
 4. PIG RECEIVER DESIGNED FOR INTELLIGENT PIGGING.
 5. EXISTING HOSE REEL CABINET AT NEW SIE BUILDING SHALL BE RELOCATED.

- LEGEND**
- ESCAPE /ACCESS CLEAR WIDTH OF NOT LESS THAN 1.525m AND CLEAR HEIGHT OF 2.3m.
 - NEW BPPS GRS SCOPE OF WORK
 - SITE BOUNDARY AT THE BPPS GRS



HKOLNG-CO0EC-21EKG-MPD010-9101 HKOLNG GRS - EQUIPMENT LIST
 DWG. NO. DRAWING TITLE

REFERENCE DOCUMENTS

REV	DATE	DESCRIPTION	BY	CHK'D	APP'D	CLP
C	03JUN2020	ISSUED FOR REVIEW	AKR	ASD	MF	
B	17APR2020	INTERNALLY APPROVED	AKR	ASD	MF	
A	21FEB2020	DISCIPLINE INTERNAL CHECK	AKR	ASD	MF	

CLIENT	Capco 香港中華煤氣有限公司 Cable News Power Co. Ltd.	Offshore Oil Engineering Co., Ltd.	JOB No. 20ZB-DD02
SIGNATURE	DATE	PROJECT: HONG KONG OFFSHORE LNG TERMINAL PROJECT PACKAGE B	CERTIF. No. A112002816
DRAWN	SGB	20AUG2020	SCALE (A3) 1 : 1000
DESIGNED	AKR	20AUG2020	
CHECKED	ASD	20AUG2020	
REVIEWED	TWC	20AUG2020	
EXAMINED	TWC	20AUG2020	
APPROVED	MF	20AUG2020	DWG No. HKOLNG-CO0EC-21EKG-MLD020-9112
			REV. C