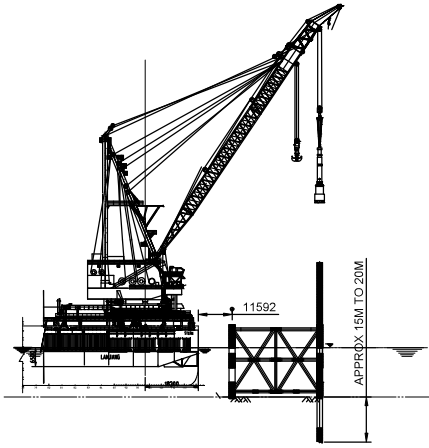
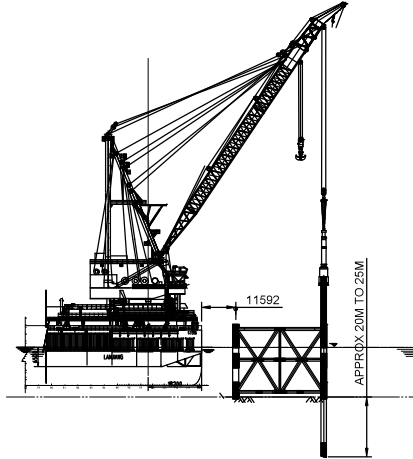


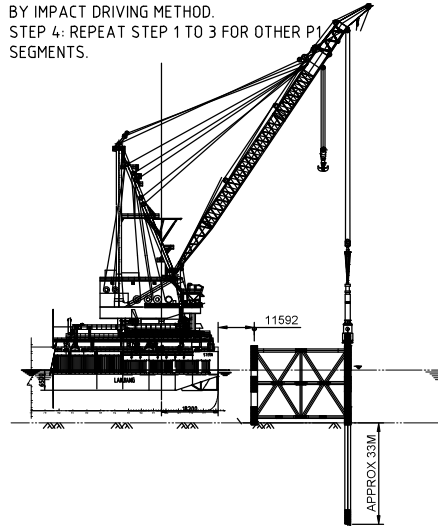
STEP 1: RIGUP THE FIRST SECTION OF PILE(P1) AND STAB INTO JACKET TILL PENETRATION BY SELF-WEIGHT OF PILE.



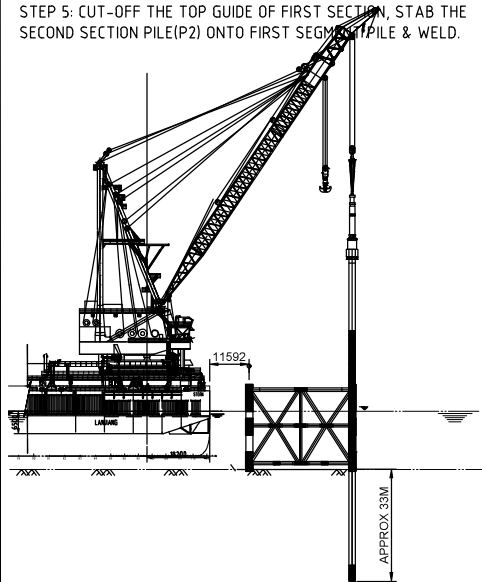
STEP 2: STAB THE MHU (800 or 1200 AND 1900) HAMMER ON THE TOP OF P1 TO SELF PENETRATION.



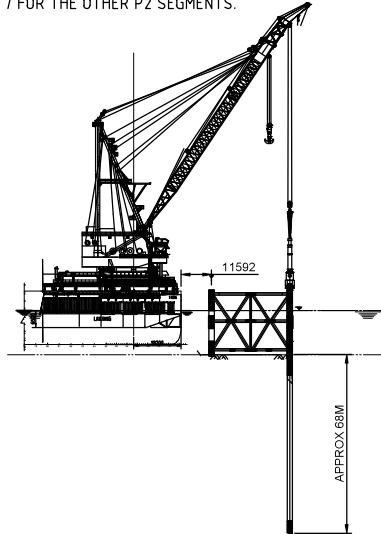
STEP 3: DRIVING THE P1 WITH MHU HAMMER BY IMPACT DRIVING METHOD.
STEP 4: REPEAT STEP 1 TO 3 FOR OTHER P1 SEGMENTS.



STEP 5: CUT-OFF THE TOP GUIDE OF FIRST SECTION, STAB THE SECOND SECTION PILE(P2) ONTO FIRST SEGMENT PILE & WELD.



STEP 6: STAB MHU HAMMER AND DRIVE THE PILE TO DESIGN PENETRATION.
STEP 7: UPON DRIVING P2+P1 TO DESIGN PENETRATION, REPEAT STEP 5 TO 7 FOR THE OTHER P2 SEGMENTS.



GENERAL NOTES:

1. ALL DIMENSION ARE IN MILLIMETERS.
2. PILE DRIVING INTENSITY WILL BE DONE VIA A "RAMP-UP" METHODOLOGY.

DWG. NO.		DRAWING TITLE					
REFERENCE DOCUMENTS							
REVISIONS							
No.	DATE	DESCRIPTION	BY	CHK'D	APP'D	CLP	HKE
CLIENT		PROJECT		JOB No.		CERTIF. No.	
SIGNATURE		DATE		HONG KONG OFFSHORE LNG TERMINAL PROJECT PACKAGE A		2020-0602	
DRAWN		DESIGNED		DRAWING TITLE:		A112002816	
CHECKED		REVIEWED		Figure 4.3			
EXAMINED		APPROVED		PILE INSTALLATION SEQUENCE FOR BD JACKET			
APPROVED		DWG. No.		REV.		0	