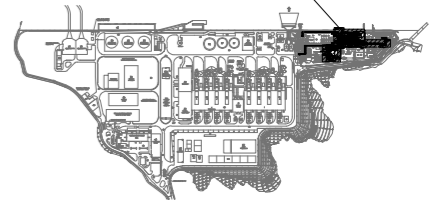


STATION GRID 1330.494 N = HONGKONG GRID 830939.204 N
 1553.588 E = 5.636mPD 809065.009 E

BPPS LANDFALL POINT(SOL)
 N 830 887.116

KEY PLAN

THIS DRAWING

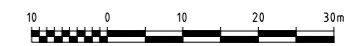


GENERAL NOTES

1. ALL DIMENSIONS ARE IN mm, ELEVATIONS & COORDINATES ARE IN m.
2. NOMINAL GRADE (PIPING DATUM) 0.000m = NOMINAL GRADE (HONG KONG DATUM) 5.700m.
3. RELATIONSHIP OF HONG KONG GRID TO STATION GRID.
 H.K. GRID 808 950.493 E = STATION GRID 0.000 E
 828 896.966 N = STATION GRID 0.000 N
4. PIG RECEIVER DESIGNED FOR INTELLIGENT PIGGING.
5. EXISTING HOSE REEL CABINET AT NEW SIE BUILDING SHALL BE RELOCATED.

LEGEND

- ESCAPE /ACCESS CLEAR WIDTH OF NOT LESS THAN 1.525m AND CLEAR HEIGHT OF 2.3m.
- NEW BPPS GRS SCOPE OF WORK
- SITE BOUNDARY AT THE BPPS GRS



HKOLNG-COEEC-21EKG-MPD010-9101 HKOLNG GRS - EQUIPMENT LIST
 DWG. NO. DRAWING TITLE

REFERENCE DOCUMENTS

REVISION	No.	DATE	DESCRIPTION	BY	CHK.	APP'D	CLP
C	03JUN2020	ISSUED FOR REVIEW	AKR	ASD	MF		
B	17APR2020	INTERNALLY APPROVED	AKR	ASD	MF		
A	21FEB2020	DISCIPLINE INTERNAL CHECK	AKR	ASD	MF		

CLIENT	Capco 香港中華煤氣有限公司 Cable Peak Power Co. Ltd.	Offshore Oil Engineering Co., Ltd.	JOB No. 20ZB-DD02
SIGNATURE	DATE	PROJECT: HONG KONG OFFSHORE LNG TERMINAL PROJECT PACKAGE B	CERTIF. No. A112002816
DRAWN	SGB	20AUG2020	SCALE (A3) 1 : 1000
DESIGNED	AKR	20AUG2020	Figure 1.2
CHECKED	ASD	20AUG2020	
REVIEWED	TWC	20AUG2020	
EXAMINED	TWC	20AUG2020	
APPROVED	MF	20AUG2020	DWG No. HKOLNG-COEEC-21EKG-MLDO20-9112 REV. C